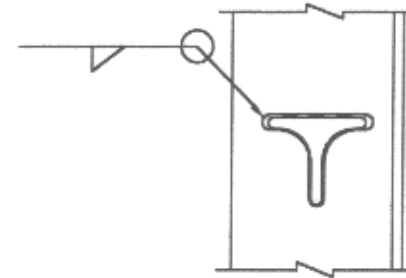


TOP VIEW
LADDER CB-RL
SAFETY RAIL ON RIGHT SIDE



SECTION A-A

NOTES:

1. LADDER MEETS OR EXCEEDS ALL OSHA REQUIREMENTS UNDER 1910.27 AND IS LIGHT-WEIGHT AND VERY ECONOMICAL.
2. NET INTERIOR WIDTH BETWEEN LADDER RAILS IS 16".
3. LADDER STEP IS 1-1/4" WIDE FLAT WITH NO-SLIP TREAD.
4. ALL MATERIALS ARE 6061-T6 EXTRUDED ALUMINUM.
5. 20ft LADDER SECTION WEIGHT = 51lbs.
6. FOR USE WITH CB-S2 SAFETY DEVICE.
7. ATTACH SUPPORT BRACKETS AT 7'-0" MAXIMUM SPACING.

CLIMBER'S BUDDY/SUR-LOC, INC. <small>P.O. BOX 750 FREMONT, IN 46737 - (216) 490-4080</small>			
<small>THIS DRAWING IS THE PROPERTY OF CLIMBER'S BUDDY-SUR LOC, INC. IT IS NOT TO BE REPRODUCED, COPIED, OR TRACED IN WHOLE, OR IN PART WITHOUT OUR WRITTEN CONSENT.</small>			
STANDARD DETAIL	SCALE 1:32	OWN J. NEFF	APP'D T. SWAGER
TITLE CLIMBER'S BUDDY ALUMINUM SAFETY LADDER			
DATE 03/08/00	DRAWING NUMBER S010-00-1LR		