

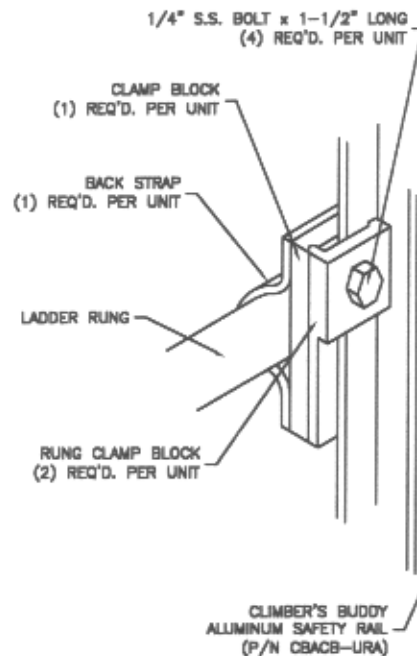
SPLICE CLAMP  
P/N CBACB-S3  
SEE BLOCK C & NOTE #2

STANDARD RUNG CLAMP  
P/N CBACB-RC  
SEE BLOCK B & NOTE #1

### ASSEMBLY ELEVATION

SCALE = 1:64

A

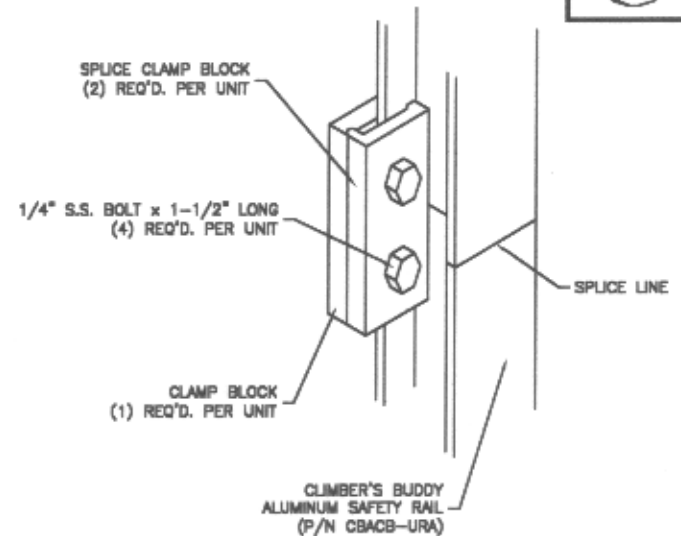


### RUNG CLAMP ASSEMBLY

(P/N CBACB-RC)

SCALE = 1:2

B



### SPLICE CLAMP ASSEMBLY

(P/N CBACB-S3)

SCALE = 1:2

C

## SPECIALTY ACCESSORIES

P/N	DESCRIPTION
CBACB-ALM	SID. ANGLE LEG MOUNT
CBACB-ALML	LARGE ANGLE LEG MOUNT
CBACB-RLM	STD. ROUND LEG MOUNT
CBACB-RLML	LARGE ROUND LEG MOUNT
ACB-S3	REMOVABLE/PERMANENT TOP STOP (SPECIFY)
ACB-3R	REMOVABLE 3ft RAIL SECTION
ACB-S2	SAFETY SLEEVE (2 RECOMMENDED/INSTALLATION)
BLT	STANDARD SAFETY BELT (2 RECOMMENDED)
9-3D-M	SAFETY HARNESS
L706	6ft LANYARD

#### NOTES:

- FOUR RUNG CLAMPS REQUIRED PER 20ft OF RAIL AND ARE STOCKED FOR 3/4" & 1" DIAMETER STANDARD RUNGS.
- SPLICE CLAMPS ARE REQUIRED FOR ALL RAIL-TO-RAIL CONNECTIONS TO PROVIDE CONTINUITY FOR SAFETY DEVICE.
- ALL FASTENERS ARE OF STAINLESS STEEL MATERIAL.

#### CLIMBER'S BUDDY/SUR-LOC, INC.

P.O. BOX 750 FREMONT, IN 46737 - (219) 495-4085

THIS DRAWING IS THE PROPERTY OF CLIMBER'S BUDDY-SUR LOC, INC. IT IS NOT TO BE REPRODUCED, COPIED, OR TRACED IN WHOLE, OR IN PART WITHOUT OUR WRITTEN CONSENT.

TYPICAL INSTALLATION	SCALE NOTED	DWN D. REYES
		APP'D D. SWAGER

TITLE

### ALUMINUM SAFETY RAIL

DATE  
02/28/00

DRAWING NUMBER  
S003-00-1AR